

# RANGE 7

## SOP

### **RANGE DESCRIPTION**

- Range 7 is an active small arms range supporting static direct and indirect fire from ground or air located on the Southwestern portion of the Quantico RTA at Grid 79206640.
- Range 7 has targets visible out to 1,947 meters.
- Accessible from inside the installation via MCB-3 to Dirt 7, Cannon Trail around Range 6, or from outside the installation via Garrisonville Rd. (Rt 610) and is secured by a gate that will be kept closed/locked or closed/manned while hot.
- WARNING!** Range 7 fires into the TA-9A High Hazard Impact Area. The entire area forward of the main firing line is a high concentration dud contaminated impact area. Entry into this area is strictly prohibited.

**-From the Main Firing line:** Principal direction of fire is between 18STH7899166630 (L) at 31.46° grid to 18STH7908466499 (R) 41.60° Grid. Figure-2.

**-Mortars from the Main Firing Line: Charge 1 MAX.** Principal direction of fire is 18STH7900666615 (L) at 30° grid to 18STH902666582 (R) at 45° grid. See Figure-5/5A through Figure-6/6A for details.

**-Mortars from the MP-7 (Lower) Mortar Pits: Charge 1 MAX.** Principal direction of fire is 18STH7924066608 (L) at 17° grid to 18STH7928166616 (R) at 38° grid. See Figure-5/5A through Figure-6/6A for details.

-Declination Station information may be found in paragraph G-18.

**Primary Use:** Static firing of Medium and Heavy Machine Guns, Mortars, Rockets, and Grenade Launchers,

### **Alternate Uses:**

- Call for fire with 155mm Artillery from GP-4. Figure-7.
- Close Air Support from Rotary and Fixed Wing aircraft. Figure-8.

### **NOTES:**

- OIC/RSO will need the key to the Range 7 gate to access this range.
- OIC/RSO will ensure the gate is **Closed and Locked or Closed and Manned** when live fire is in progress.
- Use of the Trackless Mobile Infantry Targets (TMITS) is not authorized on this range.
- Range 7 has two observation towers, use must be coordinated with Range Control via RFMSS.
- Storage in the tower is for temporary use only. Unit locks must be removed prior to Post Inspection.
- Firing from either tower is prohibited.

**Conflicts:** Range 7 has approximately 968 safety conflicts with adjacent training areas, roads, and events. OIC/RSO must check RFMSS for applicability. See Figure-3 and paragraph (G.2) below.

- Range 7 conflicts with Dirt-7 Road. All or most of the gates will be secured when live fire is conducted.
- Range 7 conflicts with MCB-3 restricting access to Range 7 from the interior roads.
- Range 7 conflicts with TA-9A and use of the EOD Ops area. Use of certain weapons and ammunition will close adjacent training areas: TA-9B, TA-9C, TA-9D, TA-10A, and TA-10C.
- Range 7 conflicts with secondary roads such as rd. 613, rd. 617, Cannon Trail to Range 9 and Muddy Road.
- Range 7 closes portions of Range 15A maneuver area when the TOW Missile is fired.
- All firing from the main firing line conflicts internally with the lower MP-7 Mortar Pits (Figure-2). Simultaneous firing can only be done by exception and with approval from Installation Range Safety Officer (IRSO).



**Figure-1**

**A: WEAPONS ACCOMMODATED:** Detailed list is maintained in RFMSS

- Service Rifles, Shotguns, and Pistols
- All Machine Guns
- Handheld 40mm grenade launchers
- MAAWS (CARL-G), SMAW, LAW, AT-4, TOW (INERT)
- MK-19
- 60mm and 81mm Mortars
- 25mm Chain gun
- 30mm Cannon
- Aerial-Fired Rockets and Machine Guns
- Aerial-Delivered Bombs (MK-76/MK-82)
- 155mm Artillery (Fired from GP-4)



**B: AMMUNITION AUTHORIZED:** Detailed list is maintained in RFMSS

- 5.56mm, 7.62mm, 6.8mm, 6.5mm, 12ga, 9mm (All)
- .50CAL (All except A606)
- .300 Winmag/Norma Mag and .338 Lapua Mag/Norma Mag
- 40mm Low Velocity/High Velocity (All)
- 60mm and 81mm Mortars (All)
- TOW (INERT ONLY)
- SMAW, MAAWS (Carl-G), AT-4, LAW (All)
- 25mm TPT/TP (Only)
- 20mm HEI
- 2.75-inch Rockets HE, Inert
- 25mm TPT
- 30mm TPT (With approval)
- Aerial-delivered bombs MK76, MK82



Figure-2





Figure-3

**C. LASERS AUTHORIZED:** Class 1, 2, and 3R or standard aiming devices mounted on standard service weapons. Class 3B, Class 4 and higher power Lasers can be fired with the following conditions:

1. All firing of Class 3B, Class 4, and higher power Lasers will be in accordance with current versions of MCO 3570.1, MCBO 3570.1, MCO 5104.1, MCB Quantico Laser Safety Survey Report, and current MIL-HDBK 828.
2. All OIC's and RSO's will complete the Laser Range Safety Officer (LRSO) course on MarineNet and be thoroughly knowledgeable with the Laser systems they employ on this range.
3. All Class 3B, Class 4, and higher power Lasers will only be fired at the targets indicated in Figure-4.
4. All personnel on the range will wear PPE (eye protection) appropriate to the wavelength and optical density for the Laser being fired.
5. A Laser firing log will be kept for all Class 3B, Class 4, or higher Laser firing.



6. No lasers will be fired over or within 10 MRAD of the horizon from a stabilized position (15 MRAD for non-stable).
7. Special care will be taken to avoid all specular hazards.
8. Special Considerations:
  - a. Class 3B Lasers: Are not eye safe, are hazardous to view unaided and aided, can cause damage to the unaided eye, require a "Danger" label to be affixed.
  - b. Class 4 Lasers: Are most dangerous class of Laser, are not eye safe under any conditions, will cause instantaneous eye damage, some will cause skin damage, and some are fire hazards.

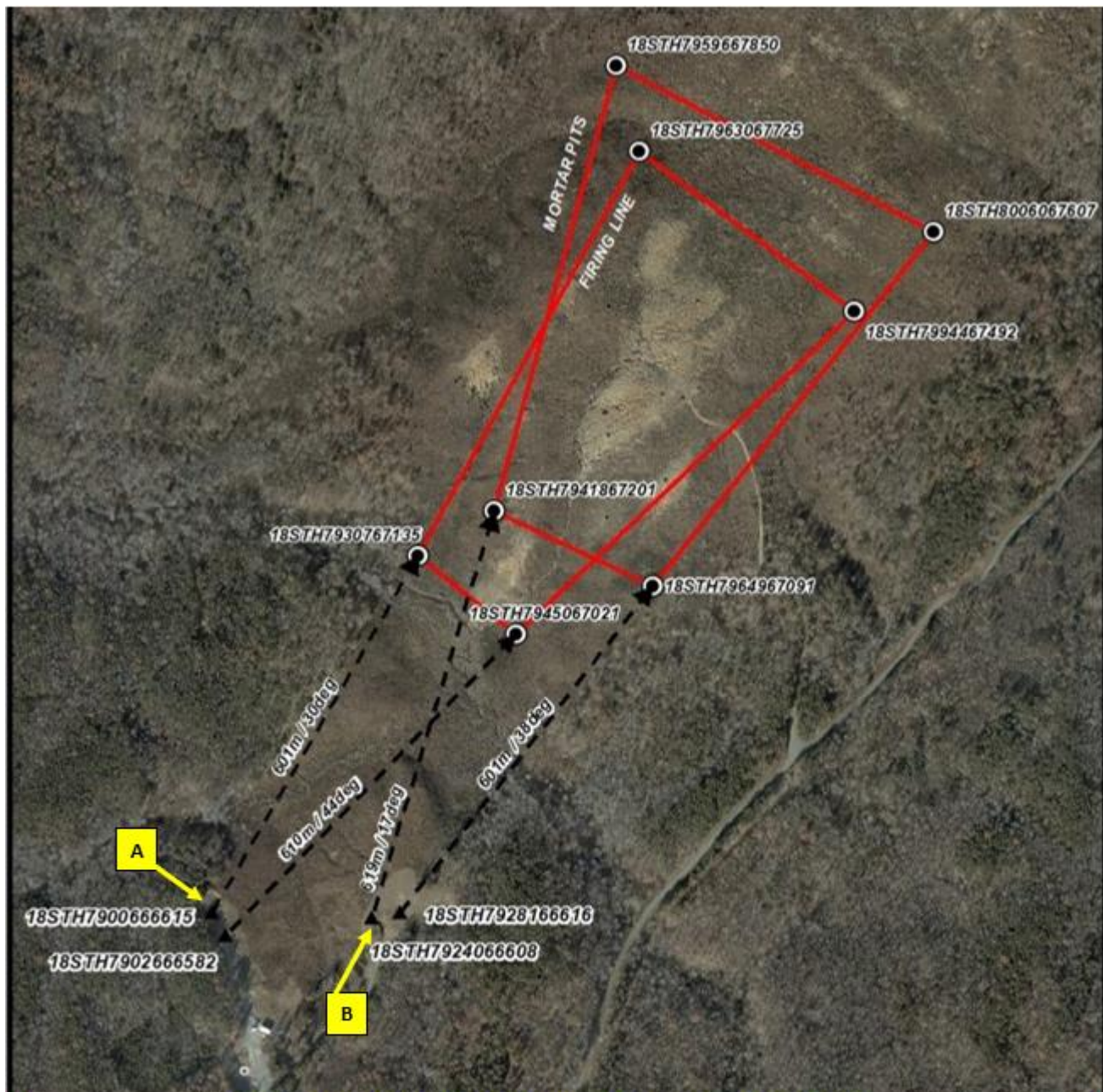


**RANGE 7 LASER SDZ**

- A: IMAGE SHOWS TARGETS AVAILABLE FOR CLASS 3B, CLASS 4, AND HIGHER LASERS.  
B: OIC, RSO, AND LRSO MUST KEEP A LOG AND CONFIRM ALL CLASS 3B, CLASS 4, AND HIGHER LASER USE STAYS WITHIN THIS AREA.  
C: NO LASERS WILL BE FIRED OVER OR WITHIN 10 MRAD OF THE HORIZON FROM A STABILIZED POSITION (15 MRAD FOR NON-STABLE).  
D: SPECIAL CARE MUST BE TAKEN TO AVOID ANY SPECULAR HAZARDS SUCH AS SNOW, STANDING WATER, GLASS OR OTHER HIGHLY REFLECTIVE SURFACES.

Figure-4





**RANGE 7: 60MM HE MORTAR FIRING POSITIONS & TARGET BOXES: MAX CHARGE-1**

A: UPPER MORTAR PITS: (L) 18STH7900666615 ON 30° GRID AZIMUTH / (R) 18STH7902666582 ON 44° GRID AZIMUTH  
 -TARGET BOX: LOWER (L) 18STH7930767135 / (R) 18STH7945067021 / UPPER (L) 18STH7963067725 / (R) 18STH7994467492  
 -CLOSEST TARGET: 601M / FAR TARGET IS EQUAL TO TABLE DISTANCE X FOR CHARGE 1

B: MP-7/LOWER MORTAR PITS: (L) 18STH7924066608 ON 17° GRID AZIMUTH / (R) 18STH7928166616 ON 38° GRID AZIMUTH  
 -TARGET BOX: LOWER (L) 18STH7941867201 / (R) 18STH7964967091 / UPPER (L) 18STH7959667850 / (R) 18STH8006067607  
 -CLOSEST TARGET: 601M / FAR TARGET EQUAL TO TABLE DISTANCE X FOR CHARGE 1

C: DUDS AND ROUNDS IMPACTING OUT OF THIS BOX (SHORT, LONG, OR WIDE) MUST BE REPORTED TO RANGE CONTROL IMMEDIATELY.

D: DECLINATION STATION INFORMATION CAN BE FOUND IN PARAGRAPH G-18.

E: IMAGE DOES NOT REFLECT AREA-A OF THE SDZ FOR EXPLOSIVE PROJECTILES.

**Figure-5**



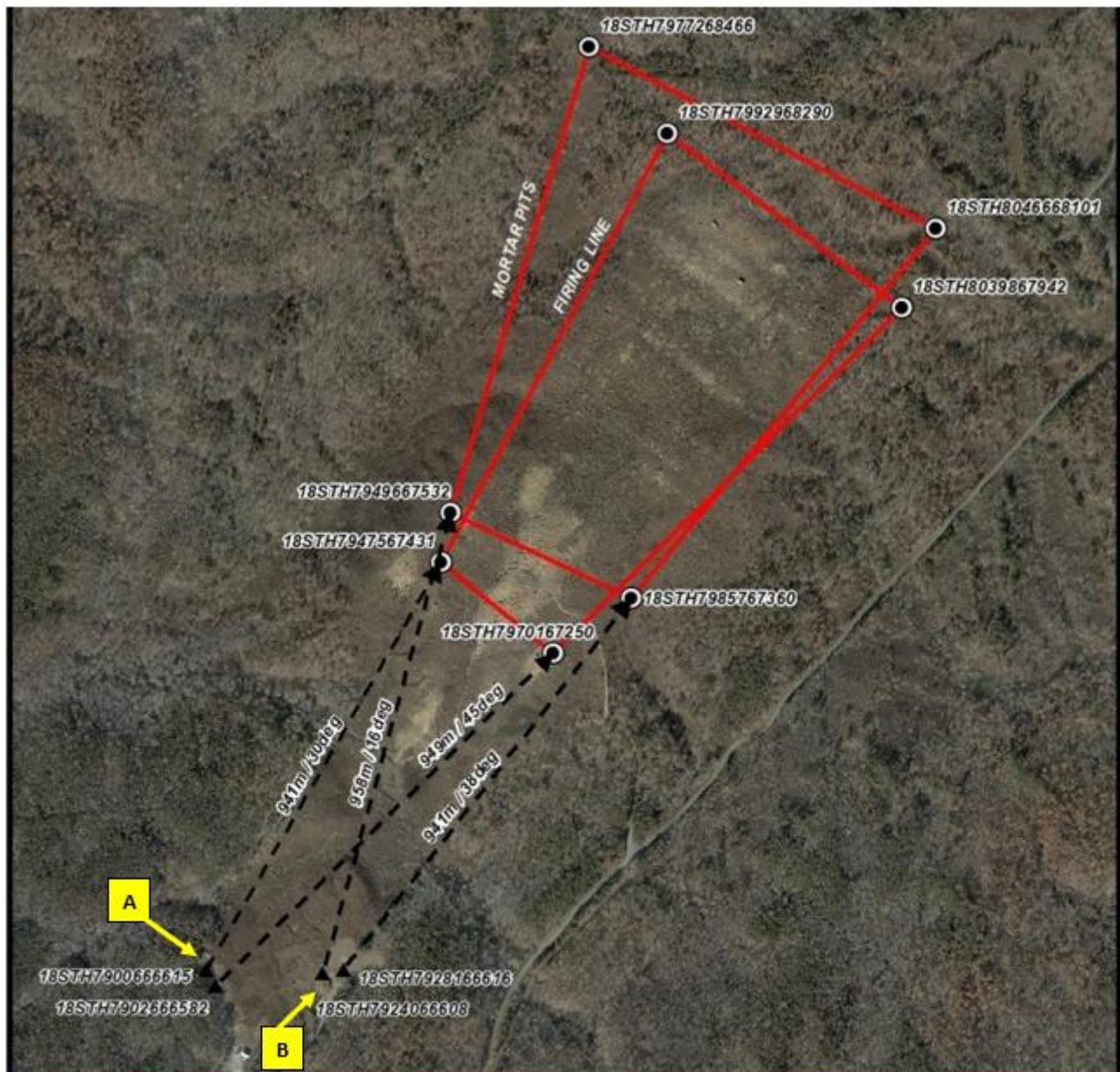


**RANGE 7: 60MM FRP MORTAR FIRING POSITIONS & TARGET BOXES: MAX CHARGE-1**

- A: UPPER MORTAR PITS: (L) 18STH7900666615 ON 30° GRID AZIMUTH / (R) 18STH7902666582 ON 38° GRID AZIMUTH  
 -TARGET BOX: LOWER (L) 18STH7911866808 / (R) 18STH7917166766 / UPPER (L) 18STH7954067555 / (R) 18STH7980767356  
 -CLOSEST TARGET: 223M / FAR TARGET IS EQUAL TO TABLE DISTANCE X FOR CHARGE 1
- B: MP-7/LOWER MORTAR PITS: (L) 18STH7924066608 ON 22° GRID AZIMUTH / (R) 18STH7928166616 ON 38° GRID AZIMUTH  
 -TARGET BOX: LOWER (L) 18STH7933266833 / (R) 18STH7941866792 / UPPER (L) 18STH7954367666 / (R) 18STH7993867458  
 -CLOSEST TARGET: 223M / FAR TARGET EQUAL TO TABLE DISTANCE X FOR CHARGE 1
- C: DUDS AND ROUNDS IMPACTING OUT OF THIS BOX (SHORT, LONG, OR WIDE) MUST BE REPORTED TO RANGE CONTROL IMMEDIATELY.
- D: DECLINATION STATION INFORMATION CAN BE FOUND IN PARAGRAPH G-18.
- E: IMAGE DOES NOT REFLECT AREA-A OF THE SDZ FOR EXPLOSIVE PROJECTILES.

Figure-5A





**RANGE 7: 81MM HE MORTAR FIRING POSITIONS & TARGET BOXES: MAX CHARGE-1**

A: UPPER MORTAR PITS: (L) 18STH7900666615 ON 30° GRID AZIMUTH / (R) 18STH7902666582 ON 45° GRID AZIMUTH  
 -TARGET BOX: LOWER (L) 18STH7947567431 / (R) 18STH7970167250 / UPPER (L) 18STH7992968290 / (R) 18STH8039867942  
 -CLOSEST TARGET: 941M / FAR TARGET IS EQUAL TO TABLE DISTANCE X FOR CHARGE 1

B: MP-7/LOWER MORTAR PITS: (L) 18STH7924066608 ON 16° GRID AZIMUTH / (R) 18STH7928166616 ON 38° GRID AZIMUTH  
 -TARGET BOX: LOWER (L) 18STH7949667532 / (R) 18STH7985767360 / UPPER (L) 18STH7977268466 / (R) 18STH8046668101  
 -CLOSEST TARGET: 941M / FAR TARGET EQUAL TO TABLE DISTANCE X FOR CHARGE 1

C: DUDS AND ROUNDS IMPACTING OUT OF THIS BOX (SHORT, LONG, OR WIDE) MUST BE REPORTED TO RANGE CONTROL IMMEDIATELY.

D: DECLINATION STATION INFORMATION CAN BE FOUND IN PARAGRAPH G-18.

E: IMAGE DOES NOT REFLECT AREA-A OF THE SDZ FOR EXPLOSIVE PROJECTILES.

**Figure-6**





**RANGE 7: 81MM FRP MORTAR FIRING POSITIONS & TARGET BOXES: MAX CHARGE-1**

- A: UPPER MORTAR PITS: (L) 18STH7900666615 ON 29° GRID AZIMUTH / (R) 18STH7902666582 ON 44° GRID AZIMUTH  
 -TARGET BOX: LOWER (L) 18STH7932067185 / (R) 18STH7948667054 / UPPER (L) 18STH7995368336 / (R) 18STH8043567979  
 -CLOSEST TARGET: 650M / FAR TARGET IS EQUAL TO TABLE DISTANCE X FOR CHARGE 1
- B: MP-7/LOWER MORTAR PITS: (L) 18STH7924066608 ON 17° GRID AZIMUTH / (R) 18STH7928166616 ON 38° GRID AZIMUTH  
 -TARGET BOX: LOWER (L) 18STH7942967248 / (R) 18STH7967967130 / UPPER (L) 18STH7978668516 / (R) 18STH8049968141  
 -CLOSEST TARGET: 650M / FAR TARGET EQUAL TO TABLE DISTANCE X FOR CHARGE 1

C: DUDS AND ROUNDS IMPACTING OUT OF THIS BOX (SHORT, LONG, OR WIDE) MUST BE REPORTED TO RANGE CONTROL IMMEDIATELY.  
 D: DECLINATION STATION INFORMATION CAN BE FOUND IN PARAGRAPH G-18.  
 E: IMAGE DOES NOT REFLECT AREA-A OF THE SDZ FOR EXPLOSIVE PROJECTILES.

Figure-6A





#### RANGE 7: ARTILLERY BOX

A: THE ARTILLERY IMPACT BOX IS 500M WIDE, 1,065M DEEP, WITH THE FORWARD EDGE 975M FROM THE MAIN FIRING LINE.

-LOWER RIGHT: 18STH7981467218

-LOWER LEFT: 18STH7938967478

-UPPER RIGHT: 18STH8039667983

-UPPER LEFT: 18STH8003368324

B: FORWARD OBSERVERS WILL USE TOWER-1 (FIGURE-1) TO CONFIRM IMPACTS. ALL ROUNDS FROM GP-4 MUST IMPACT HERE.

C: AREA C OF THE ARTILLERY SDZ IS OFF LIMITS TO ALL PERSONNEL.

D: MOVEMENT BEYOND THE DIRT-7A GATE IS PROHIBITED DURING THIS EVENT.

E: DUDS AND ROUNDS IMPACTING OUT OF THIS BOX (SHORT, LONG, OR WIDE) MUST BE REPORTED TO RANGE CONTROL IMMEDIATELY.

**Figure-7**





Figure-8

#### D. TARGETS/SIMULATORS/DEVICES.

1. Portable Infantry Targets (PITS), Trackless Mobile Infantry Targets (TMITs), and Steel Reactive Targets (SRTs) are NOT authorized on this range due to UXO unless coordinated with and approved by Range Control.
2. Training IED's, simulators, etc. are authorized for this range and must be located behind the main firing line.
3. All training systems must be coordinated through the Training Systems Support Desk (TSSD).
4. Additional targets such as paper, plastic, wood framed, to include SRT are not authorized unless coordinated with the IRSO and approved in RFMSS in advance.
5. Pallets and tires are not authorized targets or target reference points.
6. OIC/RSO must ensure all targets are engaged from positions, so the gun-target lines and all rounds fired do not exceed the left and right lateral limits.



7. SRTs, if approved, must be a minimum of 3/8" thick and constructed of AR-500 or greater steel and comply with SOUM 15-23 or MCO 3570.1D/DAPAM 385-63 when it is released and this SOUM rescinded.
8. Enhanced Performance Round (EPR) ammunition (M855A1/M80A1) is NOT authorized to be fired on SRTs, steel protective plates for Portable Infantry Targets (PITS), or TMITs.
9. EPR ammo is authorized for the steel targets permanently emplaced in the impact area.
10. SRTs, if approved, will be engaged according to the distances listed in paragraph (E).
11. Contact Training Support Center (TSC) at (703)432-7026/7969 for target support or questions.
12. Any additional targets, if approved for use, must be emplaced by MCBQ EOD and prior coordination is required with EOD and the OIC/RSO.
13. Range 7 has the following targets permanently emplaced in the Dud Impact Area:
  - a. 18 Large EODT
  - b. 90 man-sized silhouettes
  - c. 2 shipping container stacks used as TRP for CAS
14. The targets permanently emplaced in the Dud Impact Area are not considered SRT but will be engaged by caliber as indicated in paragraph (E).

#### **E. MINIMUM SAFE ENGAGEMENT DISTANCES FOR SRT AND TMITs:**

- Does not apply to the steel target arrays on this range.
- Additional targets must be coordinated with Range Control and MCBQ EOD.

#### **F. TRACKLESS MOBILE INFANTRY TARGETS (TMITs):**

- TMITs are NOT authorized for this range.

#### **G. RANGE USE SPECIAL INSTRUCTIONS:**

1. All range regulations and this SOP will be strictly adhered to.
2. This range has internal and external conflicts. Figure-3 and Figure-7 show a few of the most common. Always confirm in RFMSS what conflicts are active for your training event.

##### **-Internal Conflicts:**

- All live fire from Range 7 closes access to the range via MCB-3 to Dirt-7 Rd.
- All live fire from Range 7 closes the EOD Ops area.
- Downrange movement on this range forward of the main firing line is prohibited with exception of access to MP-7.
- Use of Rockets, MK-19, and other weapons/ammo will close the lower mortar firing positions in MP-7.
- Use of Rockets, MK-19, and other weapons/ammo will close the southernmost portion of Dirt-7 Rd. between the Dirt-7 B and Dirt-7A gates.
- Additional conflicts created by weapon systems with back blast considerations.

##### **-External Conflicts:**

- Nearly all live fire from Range 7 closes TA-9B, TA-9C, and TA-9D.
- Use of the TOW missile (DODICS PU09, WHO5, AND WH56) close portions of Range 9 Rd. and the maneuver area of Range 15A.
- Artillery fire from GP-4 closes Dirt 7, movement and parking beyond the Dirt-7A gate is prohibited.

3. The only weapons and ammunition approved for use on this range are listed in this SOP and in RFMSS. There must be no deviation from or modification to the approved weapons and ammunition.



4. The OIC and RSO must be present during firing. Additional personnel such as FAC/JTAC or F/O for artillery are also required to be present during CAS and Call-for-Fire events.
5. Ensure range flags are posted, gates are secured/locked or secured/manned, ear protection is worn (eye protection for SRT), safety brief is given, Range Control contacted, and all fires are directed between the left and right lateral limits markers (black and white striped).
6. This range fires into the TA-9A high hazard/UXO contaminated impact area. All movement forward of the firing line or downrange movement for any reason to include fighting fires and emplacing additional targets is not authorized without approval from Range Control and MCBQ EOD escort.
7. If approved, any additional targets are limited to paper, plastic, wood framed, SRT, and TMITs. No other targets will be used such as tires, pallets, bowling pins, clay targets, cans, etc.
8. If authorized, additional SRTs will be placed and engaged IAW SOUM 15-23 or current version of MCO 3570.1/DAPAM 385-63 and this SOUM rescinded.
9. All brass, trash, targets, and materials will be removed completely at the end of training by the using unit. This includes any materials used to place targets on or stage ammo such as pallets.
10. Units that do not occupy their range within two hours of their scheduled occupy time will lose the use of that range for that day.
11. Units that have requested contractor support (battlefield effects simulators, etc.) that are not present on the specified range within 1 hour of the requested time and have not contacted RMB/TSCQ will forfeit all contracted support for the day.
12. Units that have occupied a range with approved contractor support and that have not begun to use that support within 2 hours of the requested hour of operation will forfeit all contracted support for the day.
13. Units that are training with contractor support that place themselves voluntary into check fire for 2 hours during the approved support operational hours will forfeit all support for the day.
14. Units that encounter situations where contractor support is delayed or interrupted by circumstances beyond the control of the requesting unit (RMB directed check fire, ASP support, MEDEVAC, etc.) must contact RMB/TSCQ to arrange continued support within the scope of the contract and available assets.
15. HERO sensitive munitions are commonly used on this range. It is the ROIC/RSO responsibility to understand all capabilities and limitations of their munitions. ELMR Radios and Cell Phones are required to maintain 19ft (6m) separation from HERO unsafe ordnance and 10ft (3m) separation from HERO susceptible ordnance. Distances noted on the warning label on the back of the radio issued by Range Control.
16. There is no bivouac or privately owned vehicle (POV) parking allowed behind bleachers on the range or in the LZ. These areas are designated as a MEDEVAC site.
17. All mortar ammunition must be fired from the mortar pits or from the upper firing line only. See Figure 5/5A through Figure 6/6A.



18. Declination Station locations: Contact IRSO for complete Trigonometric Listing

STATION NAME	WGS 84 EASTING	WGS 84 NORTHING	WGS 84 LAT.	WGS 84 LONG.
COMPANY 8	2 80079.778	42 64869.100	38°30'18" .20424N	77°31'19" .46569W
Aluminum Disk Located 3.3 miles north of Range 7 at Rock Hill FD. Elev: 101m/331'				
MCCDC 124	2 81658.807	42 69162.846	38°32'38" .87736N	77°30'19" .15972W
Brass Disk Located 12.3m North of intersection MCB-3/MCB-7. Elev: 123.212m/404.24'				
MCCDC 125	2 80515.255	42 69783.917	38°32'57" .89053N	77°31'07" .05753W
Brass Disk Located 12.7m northwest corner intersection of MCB-3/Rd-613. Elev: 123.1m/404'				

19. Targets closer than 310 meters will not be engaged with MK-19 HE or HEDP. These are the closest two targets in the bottom of the ravine in front of the left side of the range. These targets are primarily used for 40mm handheld grenade launchers and rockets.

20. The individual observing artillery impacts on Range 7 during Call-for-Fire/CAS exercises can be the rank of Sergeant but cannot also serve as OIC/RSO simultaneously. An OIC/RSO must be designated for the range independent of the FAC/JTAC or F/O. If there are no combined arms, then rank requirements will be IAW MCO 3570.1C.

21. Class 3B and Class 4 LASERs will not be fired at any targets other than the designated ones in this certification and this SOP. Figure-4.

22. Standard fixed-wing inbound heading for AMIP-7 and AMIP-8 is 80-110 degrees magnetic. **Air-delivered bombs (MK Series) are restricted to AMIP 7 and 8 only.** Figure-8.

23. Egress heading for fixed wing after delivery is 90-120 degrees magnetic. Aircraft will not fly north of the 69 Northing (Northernmost finger of Lunga Reservoir). Figure-8.

24. Forward Air Controllers (FAC) /Joint Tactical Air Controllers (JTAC) will coordinate with pilots to ensure no ordnance is released or fired while the aircraft is outside the Installation boundaries.

25. Aircraft commanders will ensure that while outside the Installation boundaries, weapons systems are safed and always at least one movement/safety position away from being armed.

26. Aircraft Commanders and the FAC/JTAC will contact the Fire Desk prior to take off for the required range brief.

27. TA-9A/Range 7 impact area is also the location of the EOD Operations area. MCB EOD, as well as other local military EOD units are authorized (when approved by Range Control) to place, mark and detonate UXO found on base or other Installations or NCR sites providing the safety arcs fit within the Installation impact area and its assigned restricted airspace.

28. There is no downrange movement on Range 15 and 15A while firing TOW2B INERT or 2.75" FFAR MK66 MOD O from Range 7.

29. Range 8A cannot be occupied while firing TOW2B INERT from Range 7.

30. Mortar Position-7 (Lower Mortar Pits) cannot be occupied when GP-4 is hot. Figure-7.



31. Units that do not occupy their range within two hours of their scheduled occupy time will lose the use of that range for that day.

32. Units that have requested contractor support (i.e., automated targets, PITS targets, battlefield effects simulators, etc.) that are not present on the specified range within 1 hour of the requested time and have not contacted RMB/TSCQ will forfeit all contracted support for the day.

33. Units that have occupied a range with approved contractor support (i.e., automated targets, PITS targets, battlefield effects simulators, etc.) and that have not begun to use that support within 2 hours of the requested hour of operation will forfeit all contracted support for the day.

34. Units that are training with contractor support (i.e., automated targets, PITS targets, battlefield effects simulators, etc.) that place themselves voluntary into check fire for 2 hours during the approved support operational hours will forfeit all support for the day.

NOTE: Units that encounter situations where contractor support (i.e., automated targets, PITS targets, battlefield effects simulators, etc.) is delayed or interrupted by circumstances beyond the control of the requesting unit (i.e., RMB directed check fire, ASP support, MEDEVAC, etc.) must contact RMB/TSCQ to arrange continued support within the scope of the contract and available assets.

**H. APPLICABLE MAP SHEET.** All grid coordinates listed in this order apply to the Quantico Military Installation Map V834S Edition 5-NGA 1:25000.

**I. FACILITIES**

**Towers: 2**

**Sheds: 2**

**Ammo Breakdown: 2**

**Parking: Yes**

**Description of Other Structures: Bleachers, head facilities, and 3 fixed mortar positions.**

**J. UTILITIES AVAILABLE**

Electricity: Yes

Lights: None

Water System: None

**K. INSTALLED COMMUNICATIONS.** None

**L. MEASURED DISTANCES**

LOCATION	DISTANCE (miles)	GRID
Range Control	7.5	18STH87406360
TBS	9.5	18STH87106390
ASP	14.5	18STH91256605
WTBN	14.5	18STH87806740
Quantico EMS/Fire (Fire House 3)	12.6	18STH89606410
<b>Closest EMS (Rock Hill)</b>	<b>3.3</b>	<b>18STH82606314</b>
Nearest MEDEVAC LZ	0.1	18STH79206640 (REDBIRD)
Main Side Gate	18.0	18STH94406440
Camp Upshur	25.0	18STH80007850

**Directions to MEDEVAC LZ:** MEDEVAC LZ (REDBIRD) is located behind Range 7 bleachers/tower area. Aircraft cannot land forward of firing line.

**NOTES:**

- 1: The actual location of the MEDEVAC LZ will be determined by Quantico Fire and Emergency Services at the time of the emergency. LZ listed here is for reference only.
- 2: Due to proximity to emergency services, Stafford County may be the first to respond. This is done under the Mutual Aid Agreement between MCB Quantico and surrounding Counties.

**M. AVAILABLE DAYS/HOURS:** 362 Days. 0500-2359. Quiet hours are from 2200-0600 Mon-Sat, 2200-1200 on Sunday. Use of ammunition above 7.62mm during these times require special permission from Range Control.

**N. AREA SUITABILITY**

<u>Unit Type</u>	<u>Unit Size</u>	<u>Number of Units</u>
Combat Arms	Company	1

**O. GEOGRAPHICAL DATA**

Access Routes: (Internal) Cannon Trail or Dirt-7 via MCB-3 (External) Route 610

Soil Type: Dirt

Terrain Type: Small hills

Vegetation: Grass/Woodland

**P. COMMUNICATION REQUIREMENTS:**

1. A radio check is required immediately upon occupying any portion of the RTA, every 30 minutes at top/bottom of the hour in a live fire status and every 3 hours top of the hour in a non-live fire status.
2. The Range Control Facility (RCF) Fire Desk Safety Net call sign is "Range Control". Your call sign is "**RANGE SEVEN**".
3. The Primary means of communication with the RCF (Fire Desk) on the Safety Net is via the ELMR Radio provided to OIC/RSO at time of check out on the talk group "RC Safety" (ground) and 134.1 VHF (air).
4. The Secondary means of communication with the RCF (Fire Desk) on the Safety Net is via the OIC/RSO Cell Phone to: 703-784-5321 or 5322. Cell phone number is verified at time of occupation.
5. OIC/RSO will monitor the RCF Primary and Secondary Safety Nets at all times. Instant communication is required.
6. Any unit with organic ELMR radios will have the "RC Safety" talk group programed in and use those radios as their primary means of communication within the RTA.
7. Units without organic ELMR assets will be issued ELMR radios from RMB when checking out the range.
8. Approved Non-ELMR radios are only authorized for internal communication (ground).
9. If the RCF cannot reach a unit within the RTA via primary communication, the unit will be contacted via the secondary means of communication.



10. Upon loss of primary communication the OIC/RSO will initiate a "check fire"/cease training status and will contact the RCF via secondary communication. This communication will be maintained while primary communication is being restored. Units may only resume firing/training once primary communication has been re-established and clearance is granted by the RCF.

11. OIC/RSO will comply with all guidance and commands given by the RCF.

**Q. INJURY CLASSIFICATIONS:** Injuries are classified into the following categories to aid in casualty evacuation from the RTA.

1. ROUTINE. Routine injuries are those injuries that are not threatening to life, limb or eyesight; and conditions or illnesses treatable by medication or procedures available at the base medical facilities.

2. PRIORITY. Priority injuries are those injuries that require immediate medical attention but are not threatening to life, limb, or eyesight if treated promptly.

3. URGENT. Urgent injuries are severe injuries that are threatening to life, limb, or eyesight and require immediate medical attention.

4. MASS CASUALTY. A mass casualty is a series of injuries with multiple priority and urgent medical patients.

**R. MEDICAL EVACUATION (MEDEVAC) PROCEDURES:**

1. Injury occurs.

2. Range will immediately cease fire.

3. Medical support evaluates/treats injured personnel.

4. Range OIC/RSO notifies the RCF of the injury, is the victim conscious/unconscious and what type of MEDEVAC transportation is requested (ground/air).

5. The OIC/RSO must maintain constant radio contact with Range Control and awaits further instructions.



Installation Range Safety Officer

Date: 03 Feb 2025